



SW1 Gallery

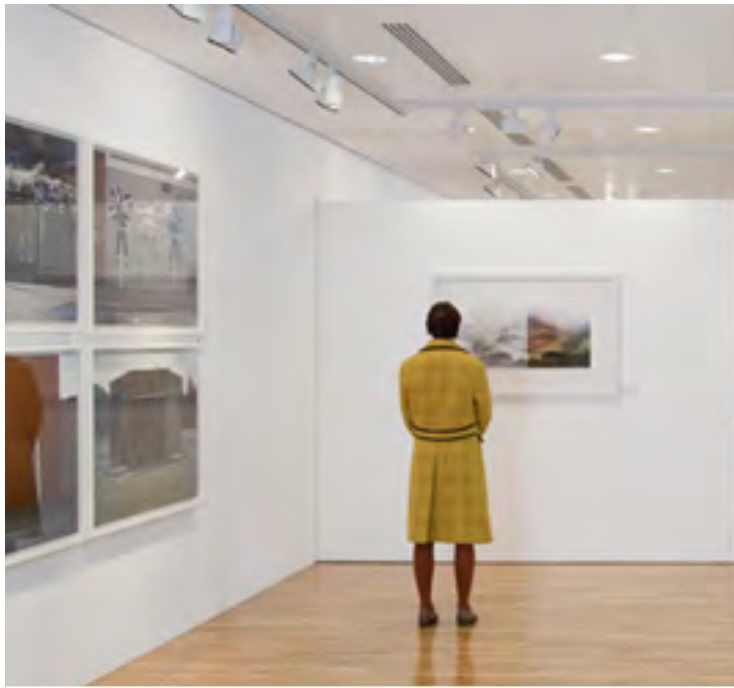
A unique contemporary gallery space
– An exceptional venue for
your exhibition

SW1 Gallery

Roof Garden Level
12 Cardinal Walk
Cardinal Place (Off Victoria Street)
London SW1E 5JE

Telephone 020 7963 4024
galler@sw1gallery.co.uk
www.sw1gallery.co.uk

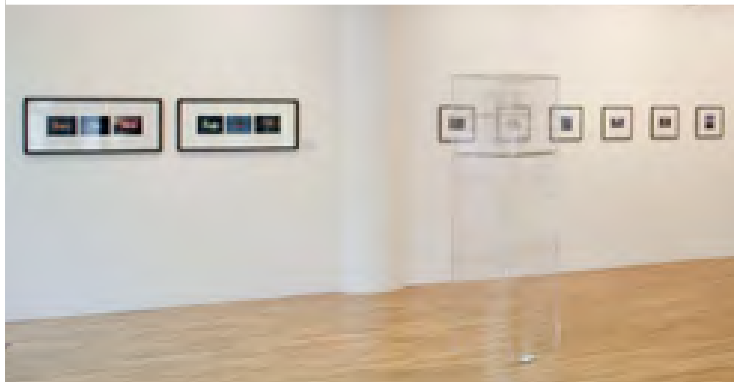




Introducing SW1 Gallery

We are a friendly professional gallery, committed to delivering your exhibition to the highest possible standard.

The gallery itself is a unique and exciting space, purpose designed with 25 metres of window frontage, extremely flexible display and a state of the art lighting system. The location could not be more central, five minutes walk from Victoria station, and housed within the busy dining and shopping area of Cardinal Place.



The Space

SW1 Gallery has 278 square metres of prime display space (3000 square ft) and 50 linear metres (165 ft) of wall hanging space. The gallery is versatile and can either be used open plan or with two partition walls. It is suitable for a wide range of sculpture, painting, photography and design.

The space is flooded with natural light, fronted by a window that spans the entire length of the gallery opening onto a public terrace garden. As such it is a particularly lively location for spring and summer exhibitions, and ideal for private view events.

Fully equipped to the highest standard with oak flooring, a PA and in-built speaker system and ERCO track lighting throughout, SW1 Gallery has a bright contemporary feel. The ERCO lighting system includes moveable spots and floodlights, which can be dimmed as required.

Unusually, we provide an underground delivery bay and a goods lift up to the gallery, making delivery of your artworks as smooth and secure as possible.



Services

We don't use a 'hanging system' as we believe your work looks best hung professionally by a technician. The hire rates include an experienced technician hanging your show.

The gallery staff can help you design your exhibition display and realise innovative ideas for presenting your work, ensuring that your exhibition is a truly memorable event.

The gallery is invigilated during regular opening hours (12-6pm Tuesday to Friday, and 12-4pm Saturday). The weekly hire charge also includes late opening until 9pm for one private view evening. The location benefits from 24h security and rates already include weekly cleaning of the gallery space.

Additional services available on request including a full exhibition organising service. We can also recommend top quality caterers, AV companies, transport and framers, however you are welcome to use your own suppliers.



Facilities include:

A kitchenette with glasses, tables and linen available at no additional charge for private views, and dishwasher, fridge and microwave. Wireless internet is available in the gallery. A disabled toilet, and two further toilets are also available, adjacent to the gallery space.

Gallery

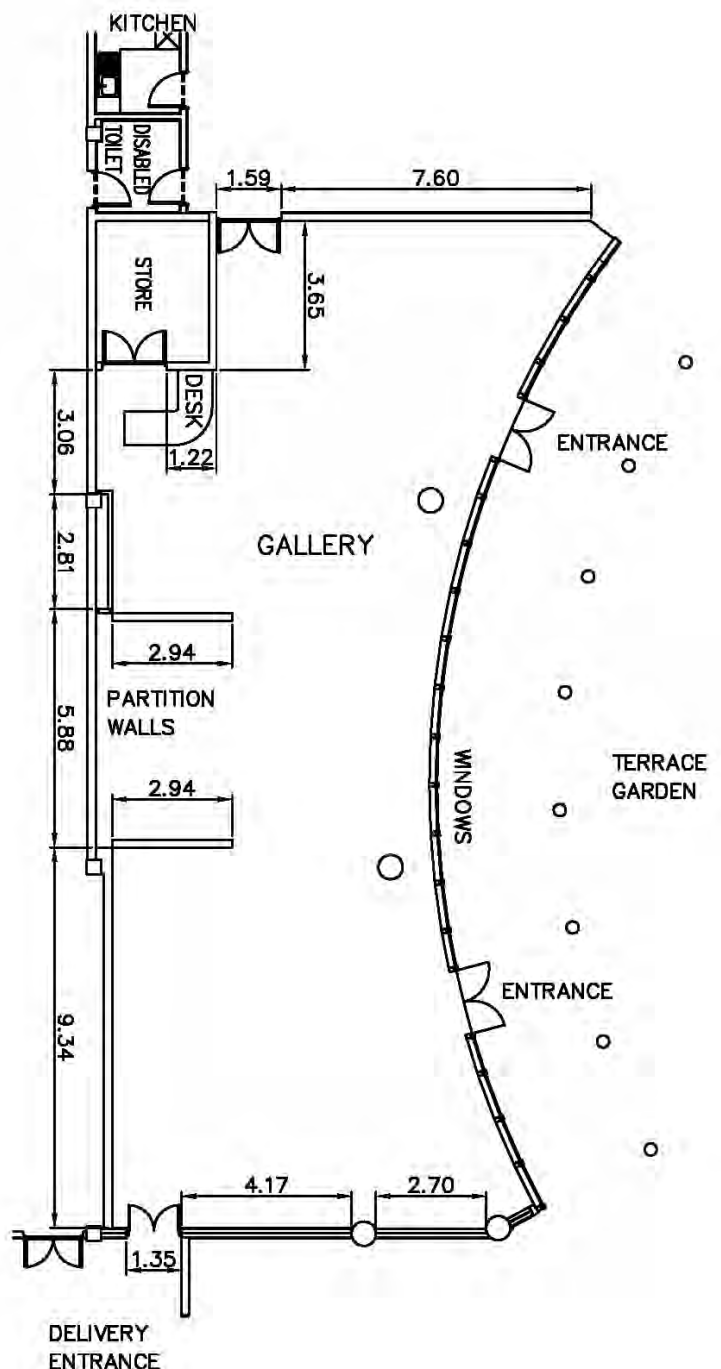
278 square metres display space (3000 sq. ft)
50.4 metres linear hang (165 ft)
25 metres window frontage (82 ft)
2.84m wall height (9.35 ft)

Delivery access via secure underground delivery bay.

Entrance to gallery for deliveries:
Door height 1.95m (6ft 4 inches),
width 1.35m (4ft 5 inches).

Goods lift for deliveries:
1.5m by 2.7m, height 2.5m, max load 2000kg.

Partition walls marked on plan are optional.



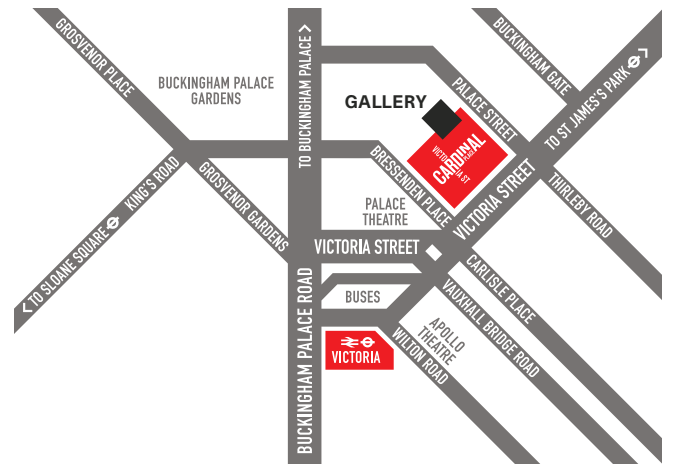


Location

Five minutes walk from Victoria station, with excellent transport links.

Neighbour to a cluster of galleries including Edel Assanti Space, Eleven Gallery, Mauger Modern Art and The Delfina Foundation. SW1 Gallery's location borders Belgravia and is minutes from the Phillips de Pury auction house, while Tate Britain is just down the road.

The terrace garden in front of the gallery hosts a lively programme of events all year round and is particularly busy from spring through the summer months.



Hire rates

£2600 + VAT for 1 week

£4500 + VAT for 2 weeks

£6400 + VAT for 3 weeks

£8300 + VAT for 4 weeks

No commission taken on work sold

Weekly hire begins on a Monday when installation takes place, take-down and removal can take place on the Saturday after close or by arrangement on Sunday.

Contact

For further information, please contact:

Owen Ward or Natasha Vicars

Telephone: 020 7963 4024

Email: gallery@sw1gallery.co.uk



Hiring SW1 Gallery

The gallery is available for hire on an evening or daily basis

Capacity

250 people for a reception or drinks.
100 people seated for dinner while retaining a bar area.
140 people seated without a bar area.

The Roof Gardens

On certain occasions, the landscaped gardens outside the gallery can be used as an additional space for an event.

Facilities available

Small kitchen, disabled toilet, two further toilets, sound system, PA system. The gallery can recommend caterers, florists, designers, printers and photographers although you are welcome to bring in your own suppliers if preferred.

Conference Suite

Three meeting rooms are available at nearby Portland House for a range of corporate events. Please contact Karen Steer for full details
Tel. 020 7963 4033 / Karen.Steer@landsecurities.com

SW1 Gallery

Roof Garden Level
12 Cardinal Walk
Cardinal Place (off Victoria Street)
London SW1E 5JE

Telephone 020 7963 4024
Email gallery@sw1gallery.co.uk

www.sw1gallery.co.uk

HIRE RATES

Evening Hire

£1,250 + VAT (6pm to 11pm)

The gallery can be hired for evening events, receptions or launches.
If there is a requirement for an earlier start or earlier access for set up, this can be discussed.

Daily Hire

£1,950 + VAT (Monday to Friday)
£2,100 + VAT (Saturday to Sunday)

Daily Hire can take place when the gallery is closed on Sundays and Mondays and other days depending on availability. The space is available from 09:00 until 18:00. If an earlier start or a later finish is needed, this can be discussed.

Weekly Hire

(Monday to Saturday)

SW1 Gallery is also available for hire for exhibitions, on a weekly basis.
Please see our exhibition hire brochure for full details.